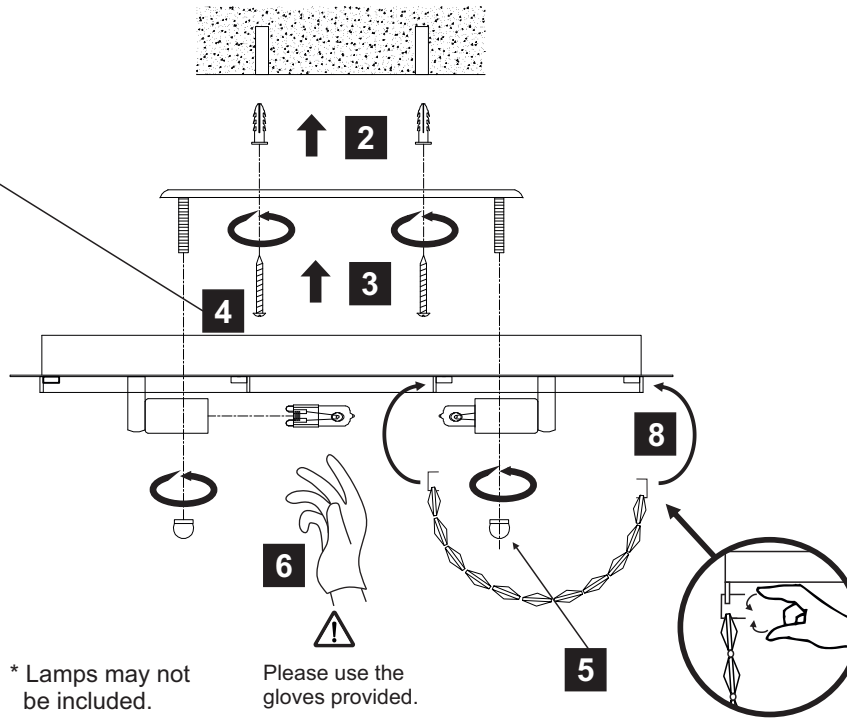
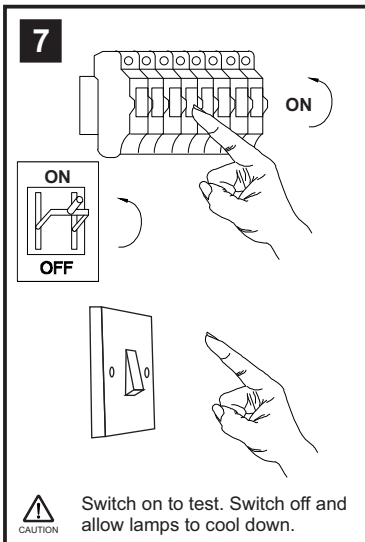
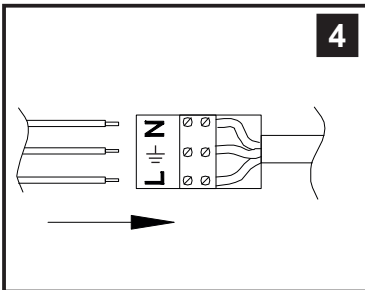
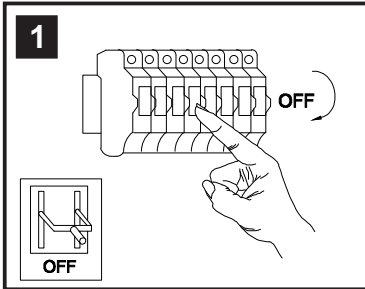


INSTALLATION INSTRUCTIONS

(ILLUSTRATIONS ARE FOR GUIDANCE PURPOSES ONLY.
ACTUAL PRODUCT MAY DIFFER FROM THE IMAGES SHOWN)

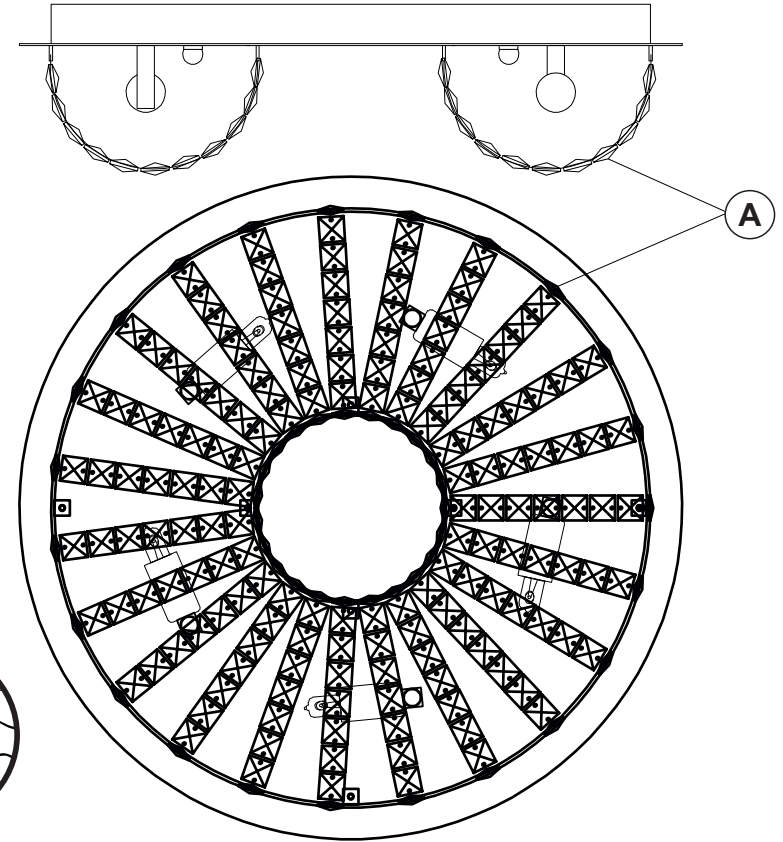


- (1) Prior to installation carefully unpack and check all the components and accessories are as per details enclosed.
- (2) These instructions should be used in conjunction with the installation guidelines included.



* Lamps may not be included.
Please ensure maximum wattage is not exceeded.

Please use the gloves provided.



Voltage: 230V - 50/60Hz
Lampholder: G9
Lamps: 5 x 33W Max

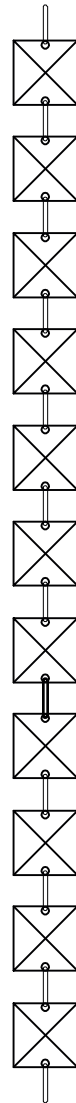


Cosmos IL30043

diyás

LIST OF COMPONENTS

A



11 x C70040

Crystal Accessories

Crystal Strand A	23 Pcs	

Installation Pack

White Gloves	2 Pcs	
Installation Instructions	2 Pages	
Installation Guidelines	2 Pages	
Additional Crystal Links	3 Pcs Each	
Fixing Screw & Plug	4 Sets	

Contents Checked By

Cosmos IL30043

