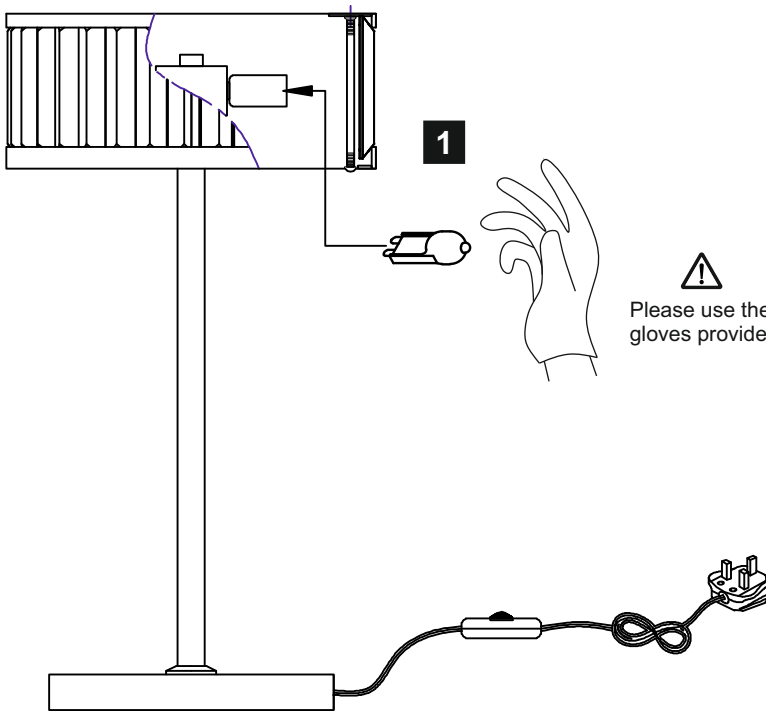
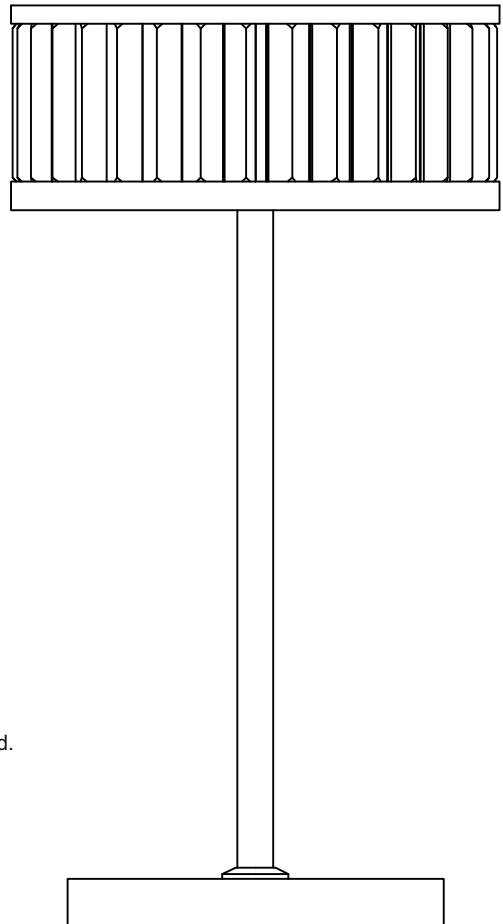
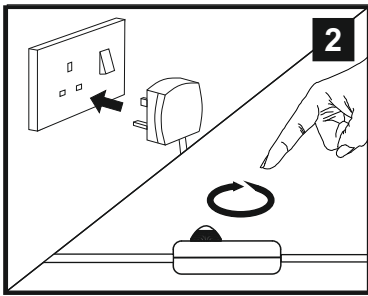


# INSTALLATION INSTRUCTIONS

(ILLUSTRATIONS ARE FOR GUIDANCE PURPOSES ONLY. ACTUAL PRODUCT MAY DIFFER FROM THE IMAGES SHOWN)



⚠  
Please use the gloves provided.

Installation Pack		
Installation Instruction	1 Page	
Installation Guidelines	2 Pgs	
G9 Lamp	3 Pcs	
White Gloves	2 Pcs	

Contents Checked By



(1) Prior to installation carefully unpack and check all the components and accessories are as per details enclosed.

(2) These instructions should be used in conjunction with the installation guidelines included.

(3) Do not touch the Halogen lamp surface with your bare hands.

**Voltage:** 230V - 50/60Hz  
**Lampholder:** G9  
**Lamps:** 3 x 33W Max



Torre IL30176

**diy**as®