

INSTALLATION INSTRUCTIONS

(ILLUSTRATIONS ARE FOR GUIDANCE PURPOSES ONLY. ACTUAL PRODUCT MAY DIFFER FROM THE IMAGES SHOWN)

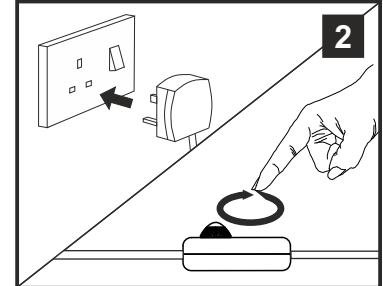
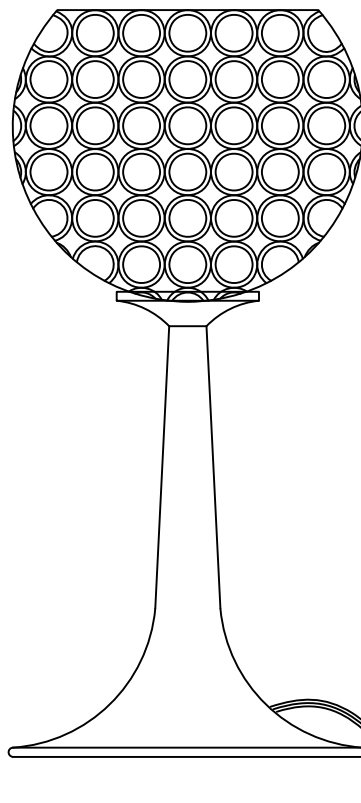
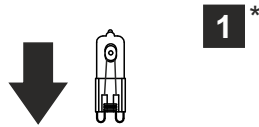
Installation Pack

White Glove	1 Pc	
Installation Instructions	1 Page	
Installation Guidelines	2 Pages	

Contents Checked By

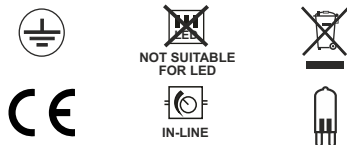


* Lamps may not be included.
Please ensure maximum wattage is not exceeded.



- ⚠ (1) Prior to installation carefully unpack and check all the components and accessories are as per details enclosed.
- (2) These instructions should be used in conjunction with the installation guidelines included.

Voltage: 230V - 50/60Hz
Lampholder: G9
Lamps: 2 x 33W Max



Ava IL30193 / IL30755

diyás®