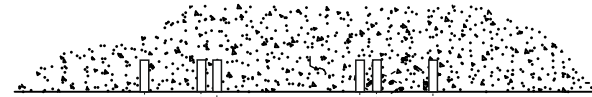
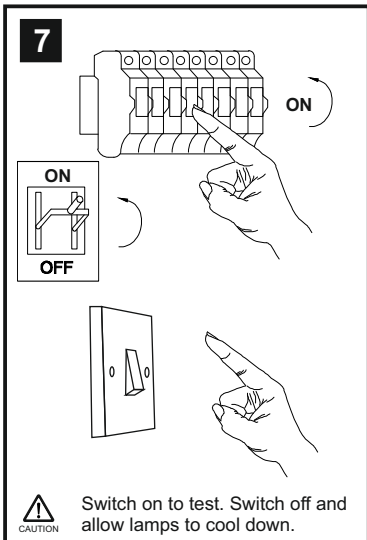
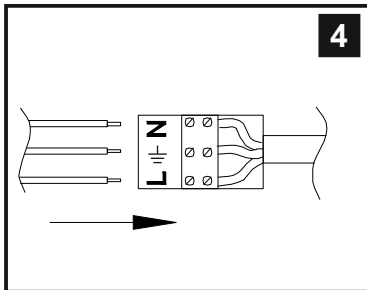
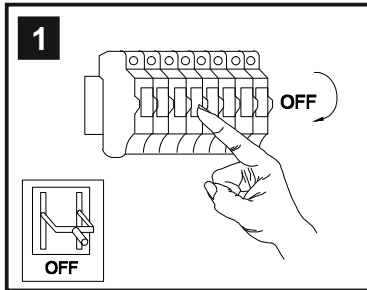


INSTALLATION INSTRUCTIONS

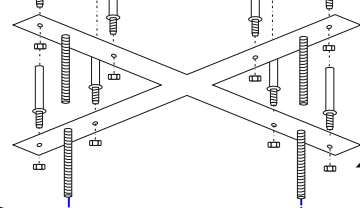
(ILLUSTRATIONS ARE FOR GUIDANCE PURPOSES ONLY.
ACTUAL PRODUCT MAY DIFFER FROM THE IMAGES SHOWN)



- (1) Prior to installation carefully unpack and check all the components and accessories are as per details enclosed.
- (2) These instructions should be used in conjunction with the installation guidelines included.



2



3



4

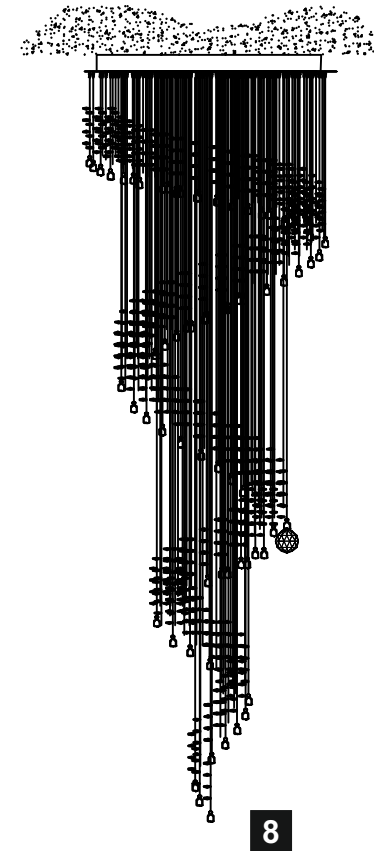
5

6*

** For best results
ensure tool is at
room temperature.

Please use the
gloves provided.

*Lamps may not
be included.
Please ensure
maximum wattage
is not exceeded.



8

For crystal installation instructions
please refer to page two.

Voltage: 230V - 50/60Hz
Lampholder: GU10
Lamps: 9 x 50W Max



COMPATIBLE



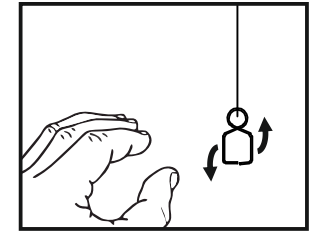
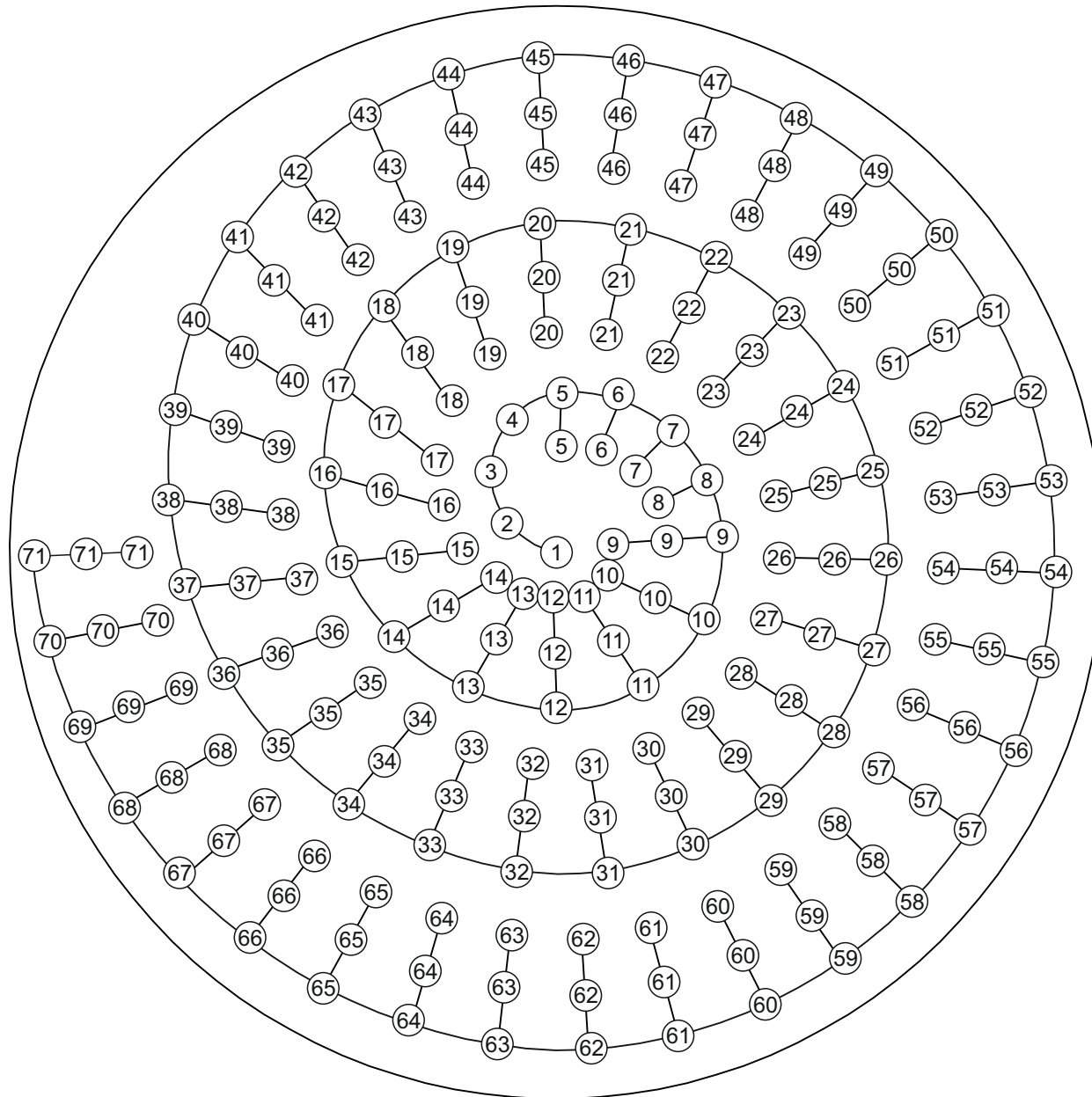
WITH SUITABLE
LAMP/DIMMER

GU10 LAMP

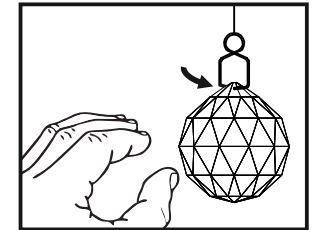
Colorado IL31374

diyas®

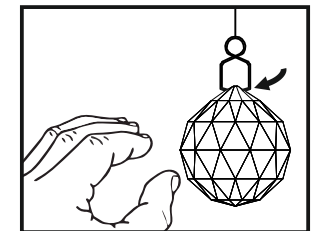
CRYSTAL INSTALLATION INSTRUCTIONS



Gently prise the lower part of the hanging clip apart.



Insert one side of the clip into the hole at the top of the crystal.

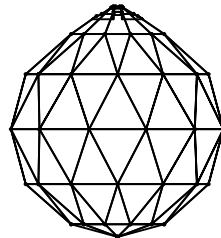


Insert the second side of the clip into the adjacent hole until the clip clicks into place.

Colorado IL31374

diyas[®]

LIST OF COMPONENTS



1 x C10030

Crystal Accessories		
Crystal Ball (30mm)	201 Pcs	

Installation Pack		
White Gloves	2 Pcs	
Installation Instructions	3 Pages	
Installation Guidelines	2 Pages	
Heavy Duty Bolts	4 Sets	
Additional Crystal Links	3 Pcs each	
Lamp Fixing Tool	1 Pc	

Contents Checked By

Colorado IL31374

